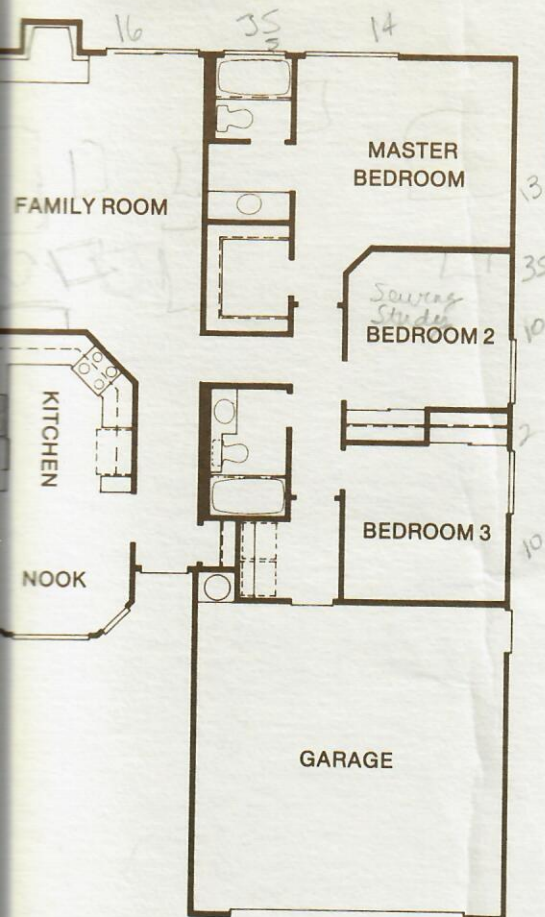


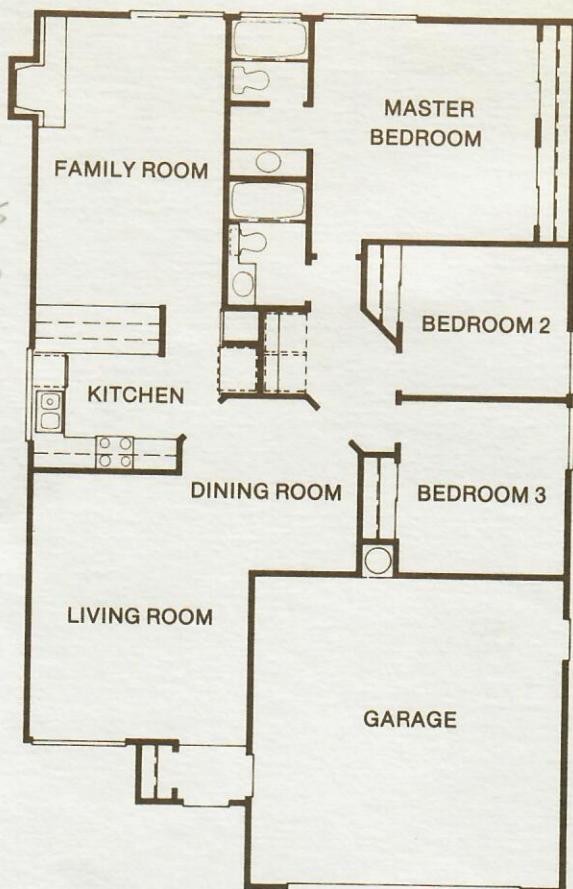


YOU DESERVE TO LIVE HERE.

"A Community with a Commitment"



1453 Plan 125 The Annadel
1250 Sq. Ft.



Plan 145 The Golden Gate
1458 Sq. Ft.

The renderings, floor plans, features and specifications illustrated and described in this brochure and in the Model Homes are subject to change without notice. This brochure does not constitute an offer to sell, nor a promise to deliver any of the homes, plans or features described.

Landscaping, Patio Treatment and other "Extra" Exterior Installations, Interior Furnishings, Custom Carpeting and other Decorator Items are not included in Basic Sales Prices.

Notes:

Additional Outstanding Features:

SHAKE ROOF

GAS RANGE

DISHWASHER

TILE ENTRYS

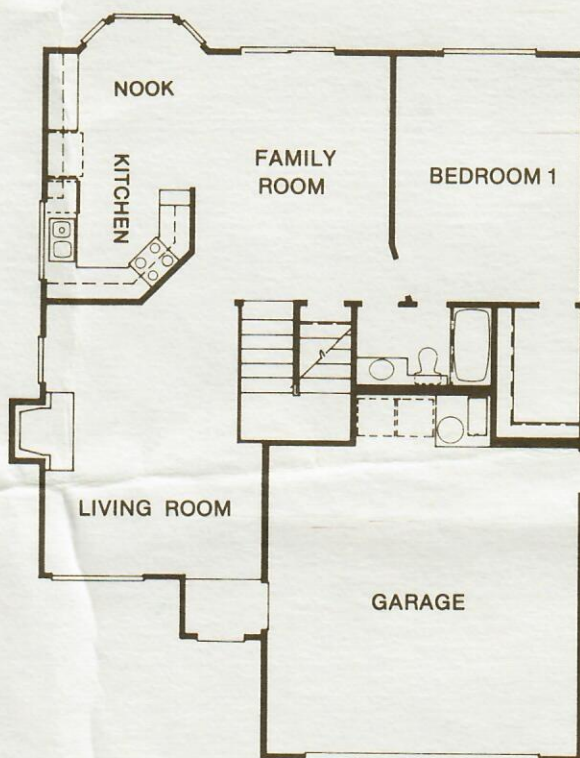
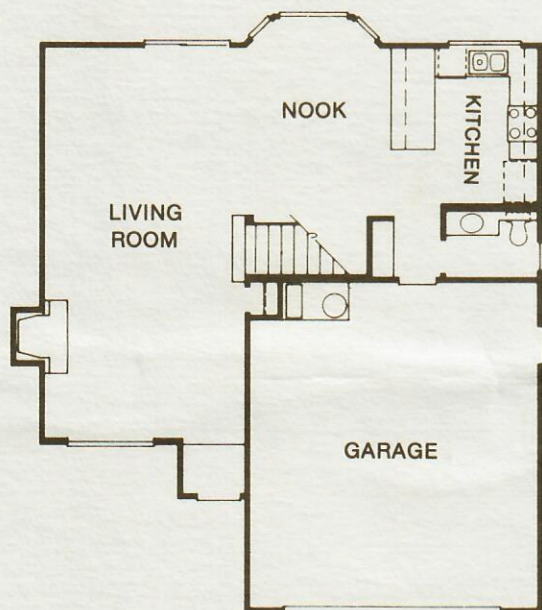
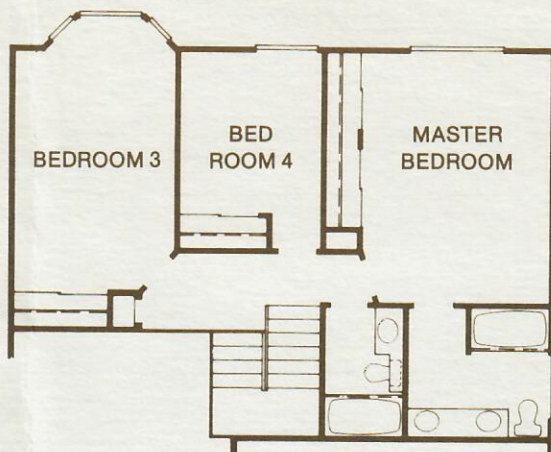
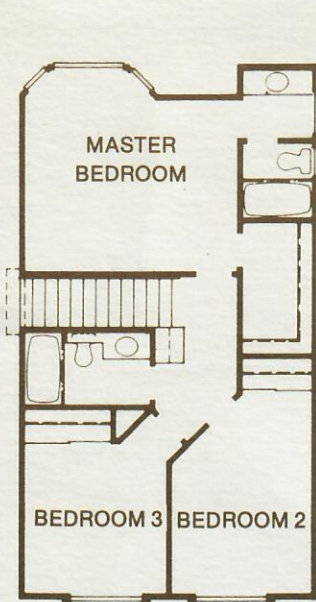
TWO CAR GARAGE

SMOKE DETECTORS

TEXTURED CEILINGS

CATHEDRAL CEILINGS

- ★ DOUBLE PANE WINDOWS
- ★ VINYL FLOOR COVERING (KITCHEN AND BATH'S)
- ★ PORCELAIN/STEEL TUBS
- ★ FIREPLACE WITH GLASS DOORS
- ★ PADDLE FAN IN EATING AREA
- ★ ENERGY EFFICIENT FEATURES



Plan 149 The Yosemite
1492 Sq. Ft.

Plan 177 The Yellowstone
1765 Sq. Ft.



EQUAL HOUSING
OPPORTUNITY

**For Specific Information:
Please inquire with your Sales Representative.**

- ★ CERAMIC TILE SURROUNDS TUB
- ★ CENTRAL FORCED AIR HEATING
- ★ HIGH PRESSURE LAMINATE KITCHEN COUNTER TOP
- ★ MIRRORED WARDROBE DOORS (145 and 177)
- ★ CUSTOMIZED BIRCH PANEL CABINETS
- ★ SLIDING GLASS DOOR TO OUTSIDE AREA
- ★ CEILING, SIDEWALL AND FLOOR INSULATION

"A Community with a Commitment"

COFFEY PARK

We take great pride in presenting **Coffey Park**, A Community with a Commitment, to provide family homes, equipped with the latest innovations to insure the home owner lasting satisfaction. Your home will have easy access to the freeway, schools and shopping.

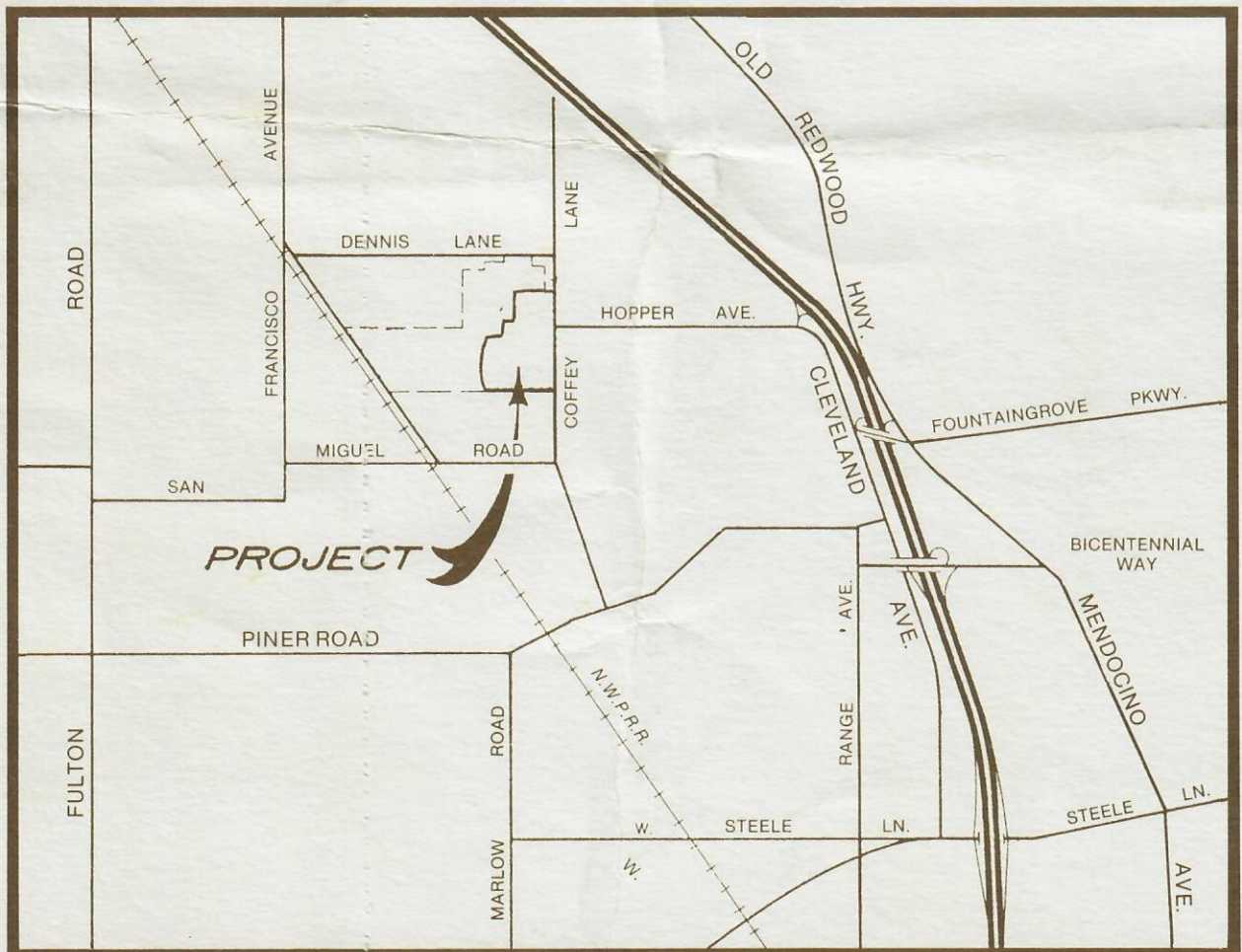
Featuring wide streets, concrete sidewalks, and driveways... All utilities will be underground. Carefree kitchens... low maintenance kitchen equipment.

This location has been carefully selected to enhance the convenience and value of your new home.

With ready access to the freeway system you are just minutes from San Francisco, while a resident of picturesque and charming Santa Rosa, surrounded by the incomparable beauty of Sonoma County.

The local school system ranks among the highest, while farsighted planning assures conveniently located elementary and high schools, both now and in the future.

A great variety of choices in modern shopping centers, with many major stores represented, makes shopping a convenience.



Sales Office
1503 Amanda Place
Santa Rosa, CA 95401
707-575-7505